

# Restoring the American Dream:

## What Would It Take to Dramatically Increase Mobility from Poverty?



### Webinar

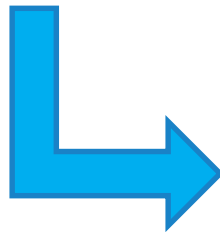
February 1, 2018

Nisha Patel | [nisha@urban.org](mailto:nisha@urban.org) | @heynisha #MobilityFromPoverty

# Webinar Housekeeping



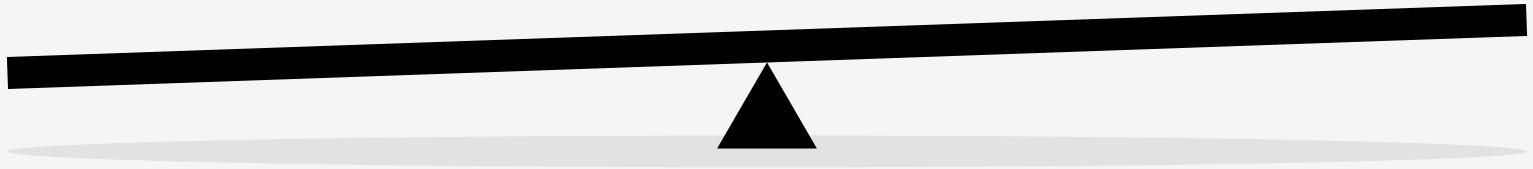
- Webinar is being recorded
- Slides and recording will be sent out after the webcast
- All participants are muted
- Type your **questions** or **comments** into the Questions box on the right. Be sure to include your name and organization.



- Questions later? [Events@urban.org](mailto:Events@urban.org)
- #MobilityFromPoverty

# American Dream

Work hard,  
get ahead

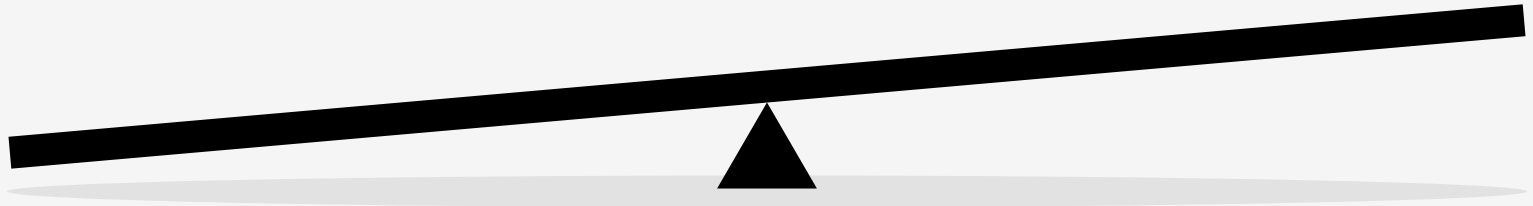


# American Dream

Work hard,  
get ahead



You do well,  
your children  
do better



# American Dream

# Today's Reality

Work hard,  
get ahead

---

You do well,  
your children  
do better

Children less likely  
to do better



## American Dream

Work hard,  
get ahead

---

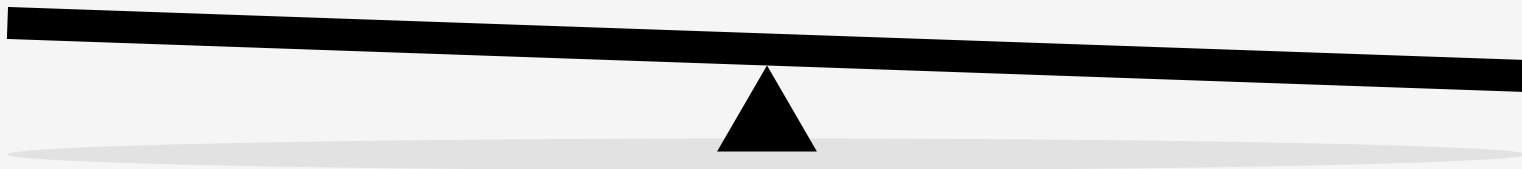
You do well,  
your children  
do better

## Today's Reality

Hard work  
isn't enough

---

Children less likely  
to do better



## American Dream

Work hard,  
get ahead

---

You do well,  
your children  
do better

## Today's Reality

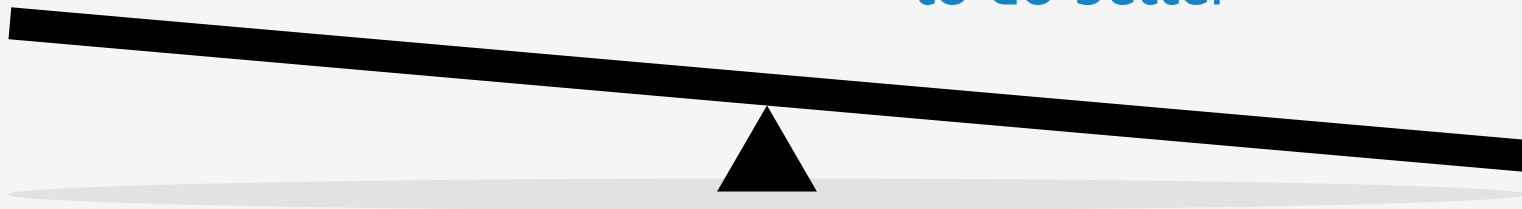
Place matters

---

Hard work  
isn't enough

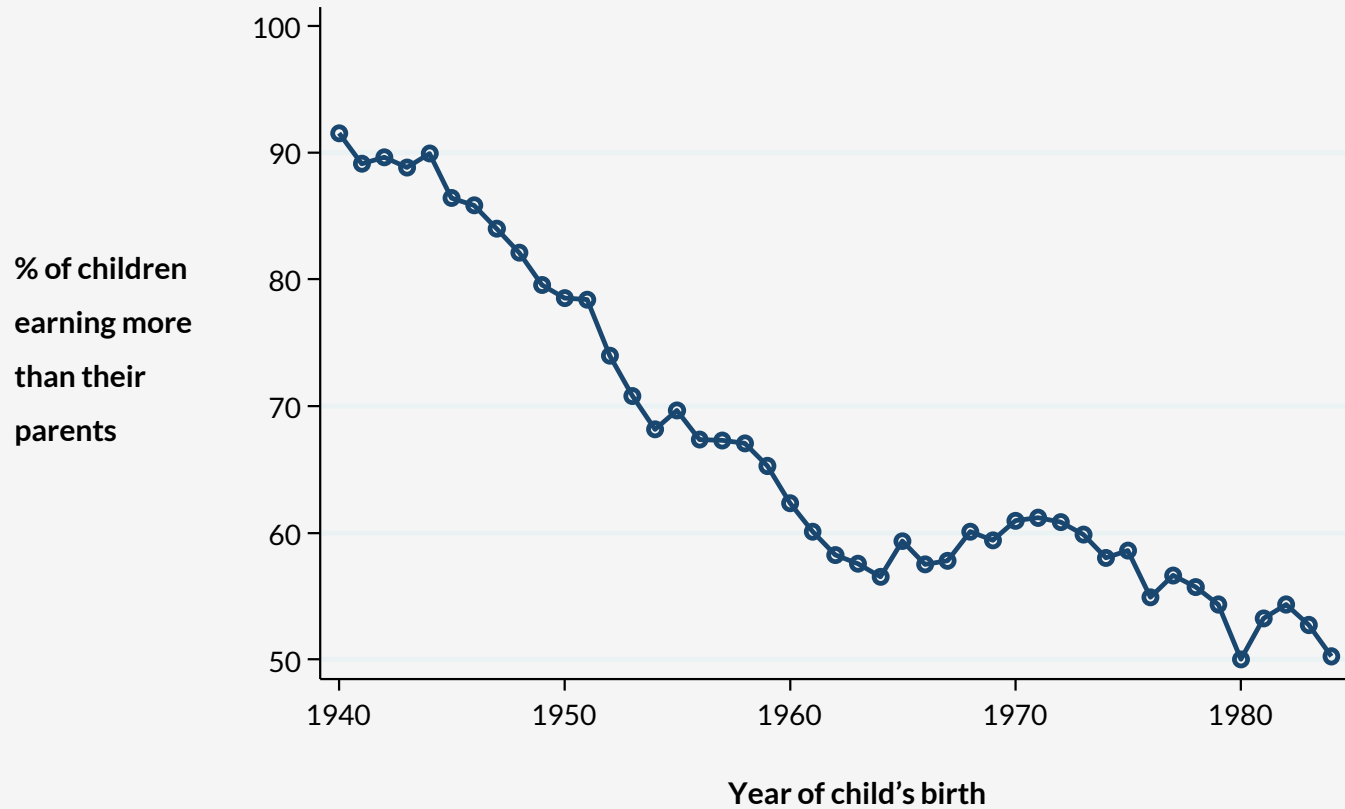
---

Children less likely  
to do better



Children **less likely** to do better  
than their parents





Source: Chetty et al. "The Fading American Dream: Trends in Absolute Income Mobility Since 1940"

**Hard work isn't enough**

**Nowhere** in the US can a FT minimum wage worker afford a 2-BD apartment



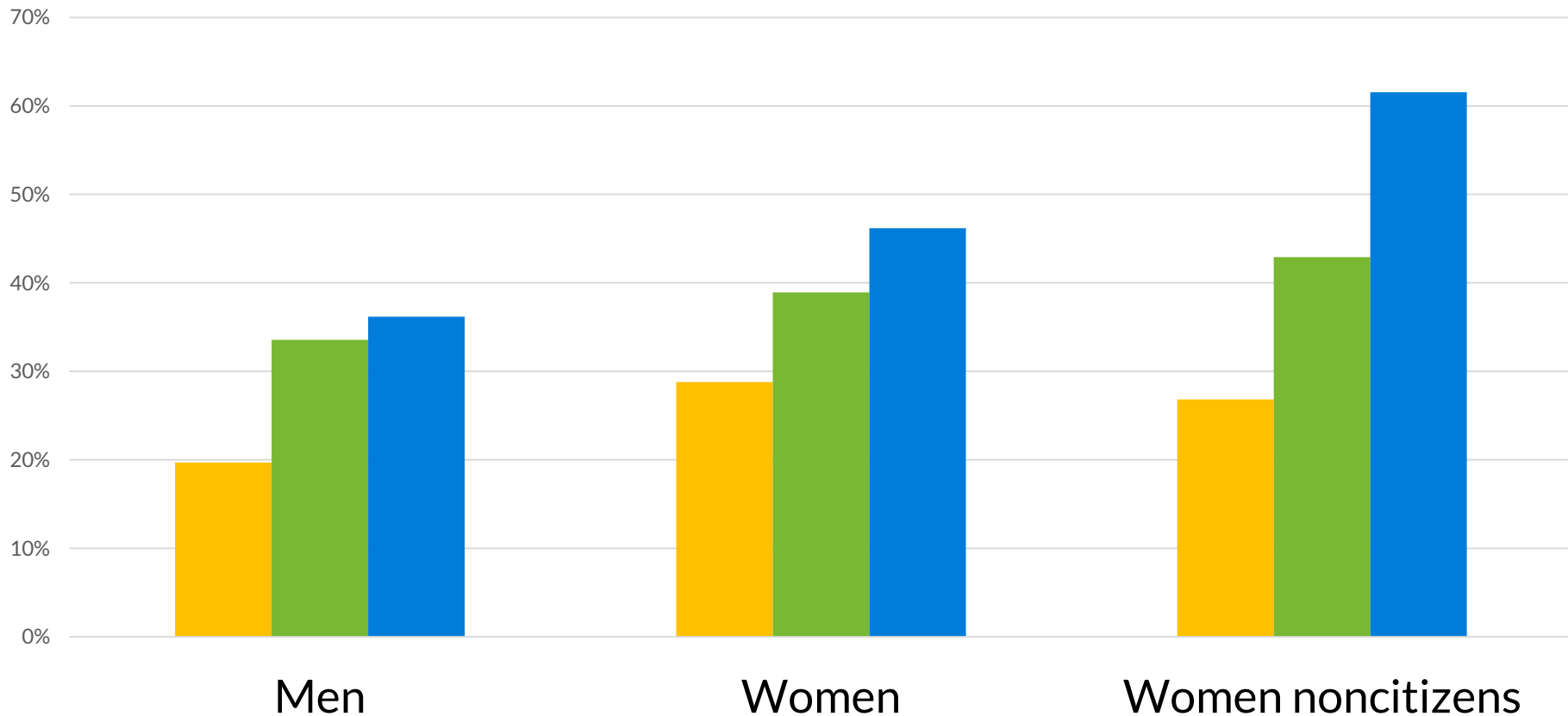
**Disparities by race, gender, &  
immigration status persist**

# Share of workers ages 18-64 who earn low wages

White

Black

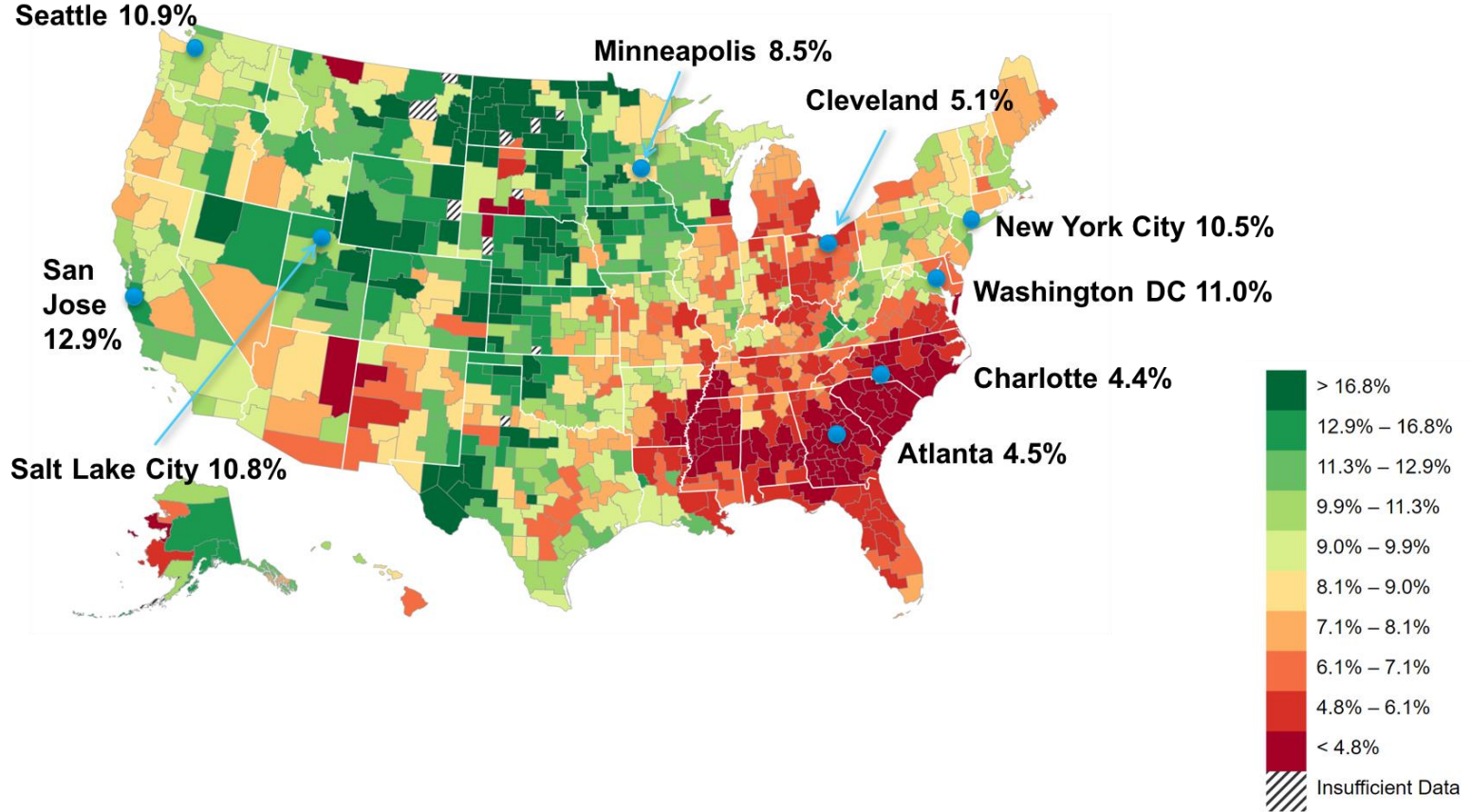
Hispanic



Source: US Partnership on Mobility from Poverty calculations, based on March 2016 CPS-ASEC data.

# Place matters

# Chances of moving from bottom 20% as children to top 20% as adults

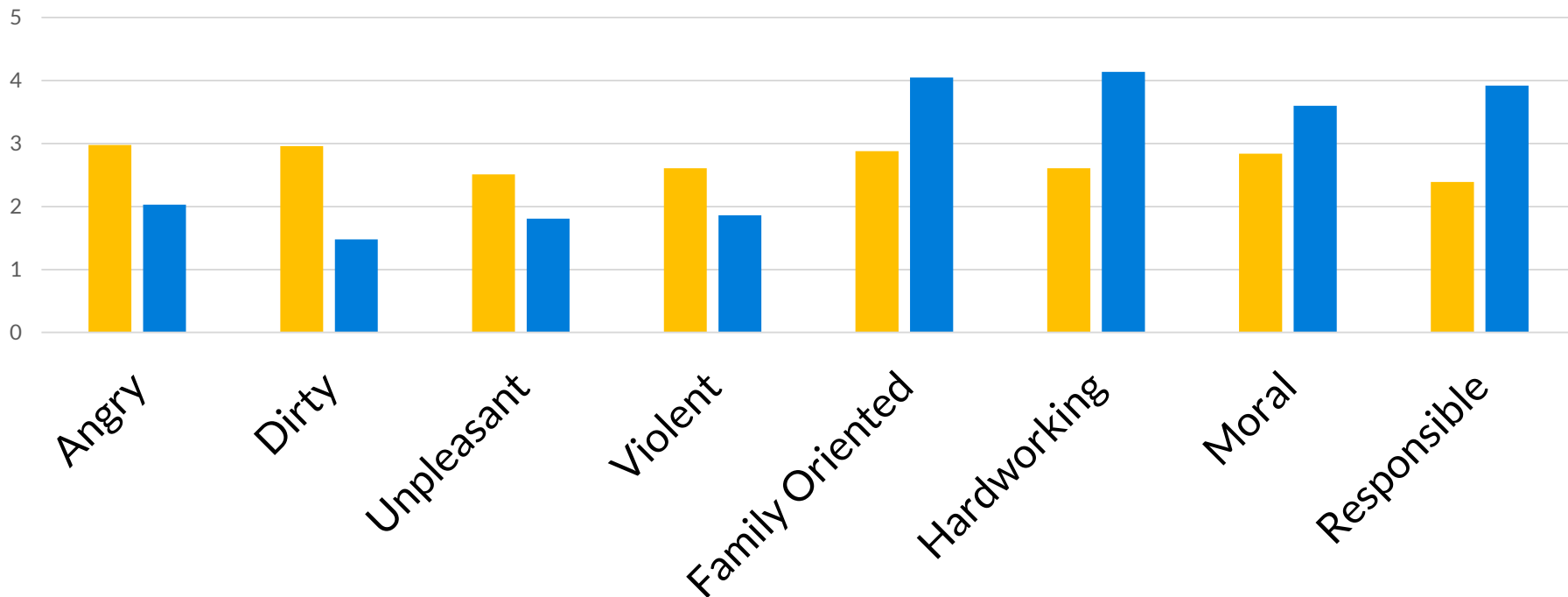


**Poverty is isolating & stigmatizing**



# Beliefs about Attributes of “the Poor” & Middle Class

■ Poor      ■ Middle Class



**Source:** Data from Catherine Cozzarelli, Anna V. Wilkinson, and Michael J. Tagler, “Attitudes toward the Poor and Attributions from Poverty,” *Journal of Social Issues* 57, no. 2 (2001): 207–27, table 1.

**What would it take to dramatically  
increase mobility from poverty?**

# The Partners

**David T. Ellwood, Chair**  
Harvard Kennedy School

**Elisabeth Babcock**  
Economic Mobility Pathways

**Joshua Bolten**  
Business Roundtable

**Arthur C. Brooks**  
American Enterprise Institute

**William J. Bynum**  
Hope Enterprise Corporation

**Raj Chetty**  
Stanford University

**Rev. Luis Cortés, Jr.**  
Esperanza

**Jennifer L. Eberhardt**  
Stanford University

**Kathryn Edin**  
Johns Hopkins University

**Robert Greenstein**  
Center on Budget and Policy Priorities

**Cheryl L. Hyman**  
formerly City Colleges of Chicago

**Anthony B. Iton**  
The California Endowment

**Lawrence Katz**  
Harvard University

**N. Gregory Mankiw**  
Harvard University

**Ai-jen Poo**  
National Domestic Worker Alliance;  
Caring Across Generations

**john a. powell**  
Haas Institute for a Fair and Inclusive  
Society

**Cecilia Rouse**  
Princeton University

**Juan Salgado**  
City Colleges of Chicago

**Eldar Shafir**  
Princeton University

**Srinija Srinivasan**  
Loove

**Marta Tienda**  
Princeton University

**Jeremy Travis**  
Laura and John Arnold Foundation

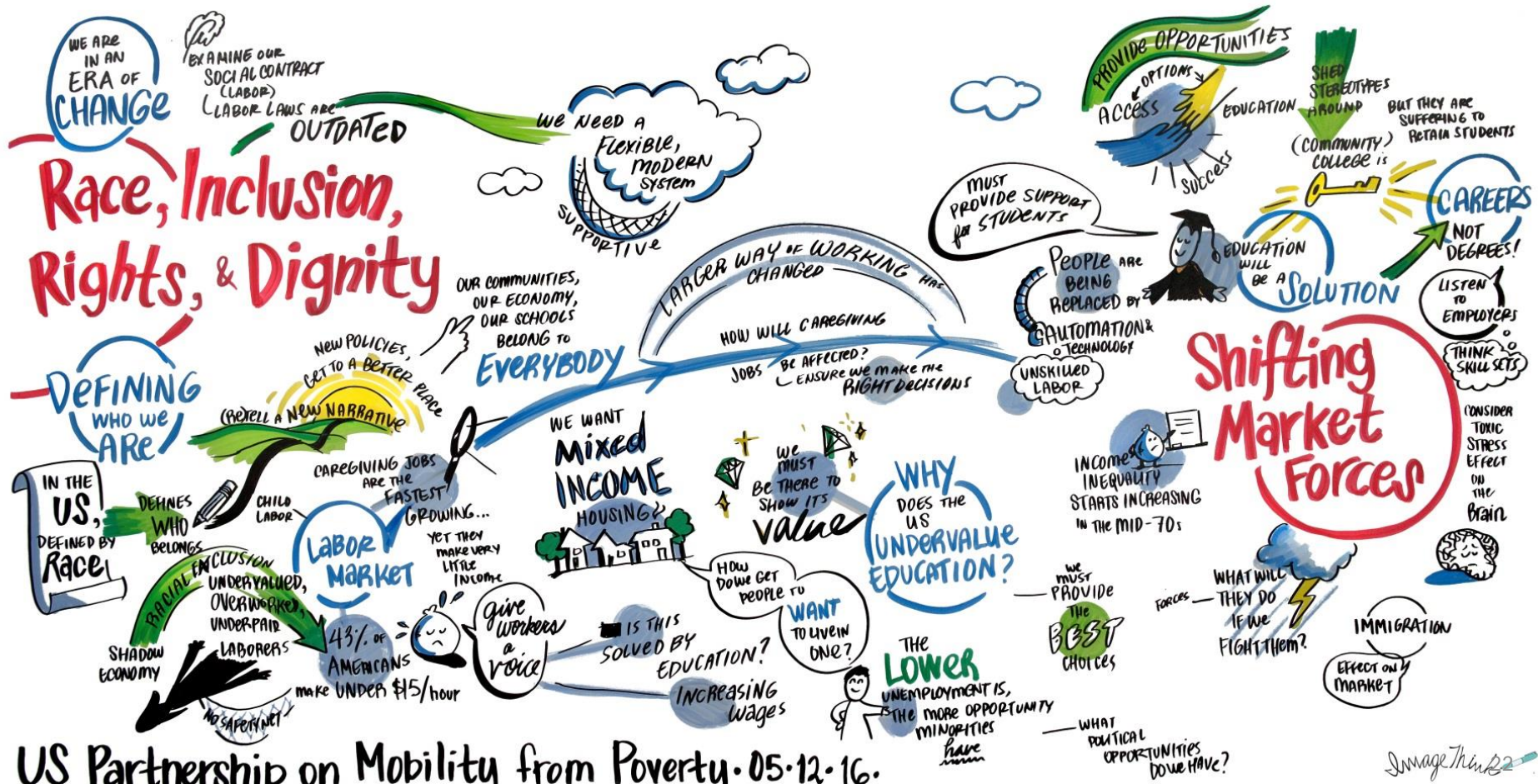
**Roxane White**  
The Aspen Institute

**Hirokazu Yoshikawa**  
New York University

# **Dreaming: Big Themes**







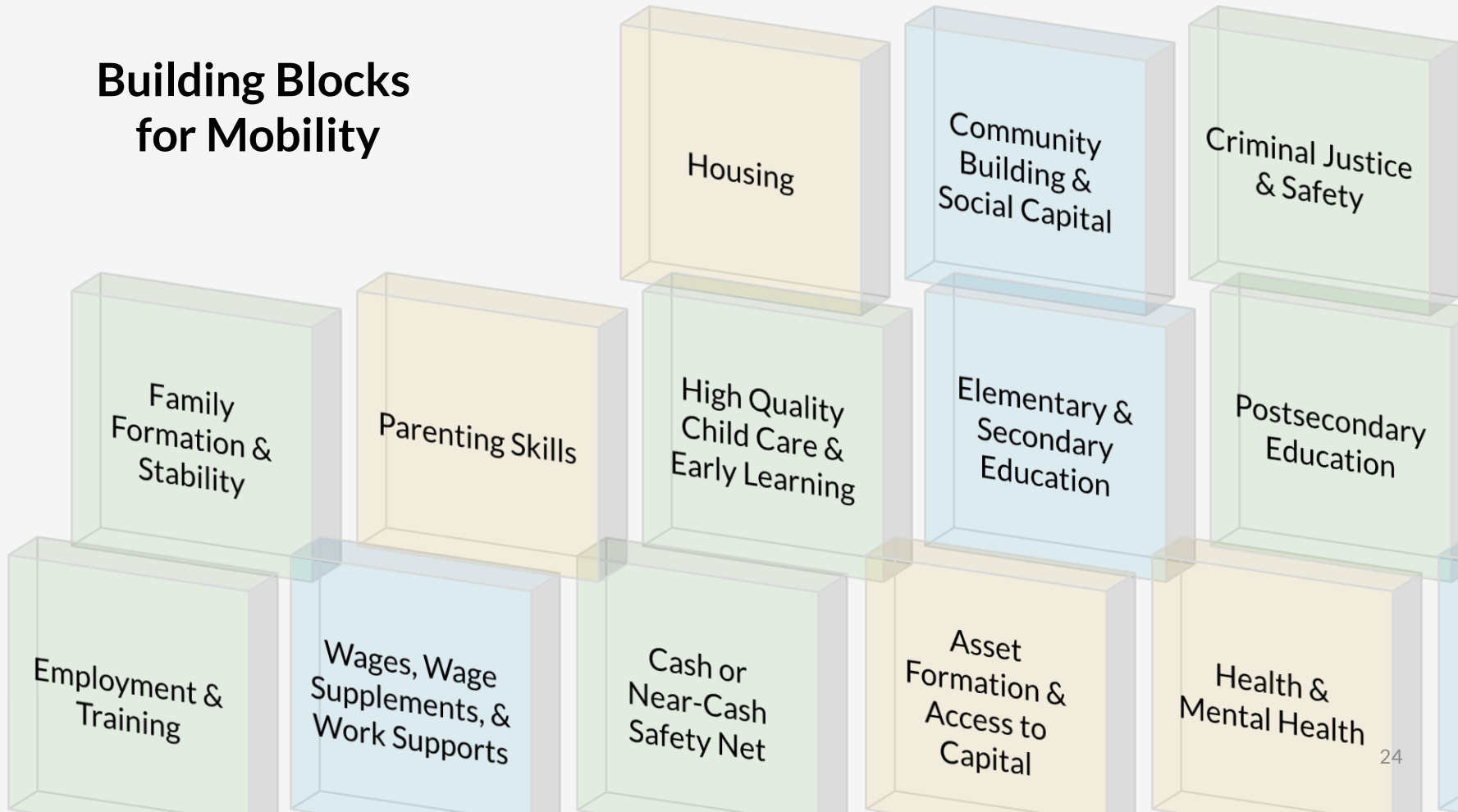
US Partnership on Mobility from Poverty. 05.12.16.

Image Thinker

# Exploration: Building Blocks for Mobility



# Building Blocks for Mobility







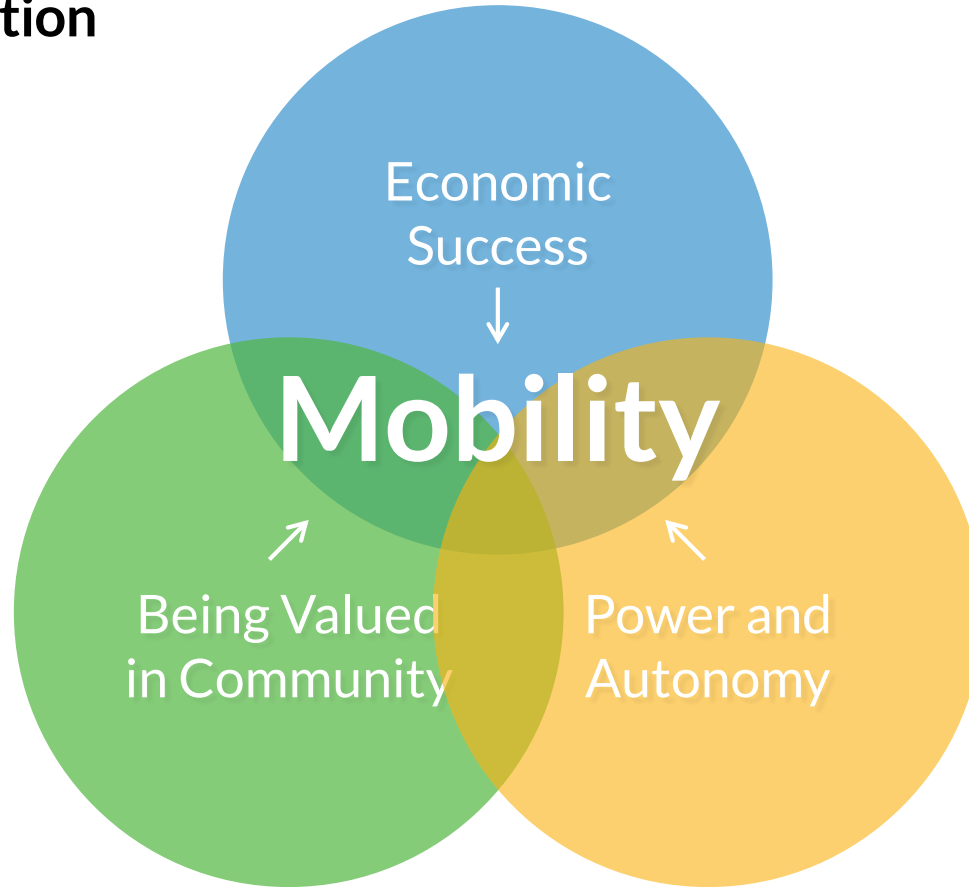




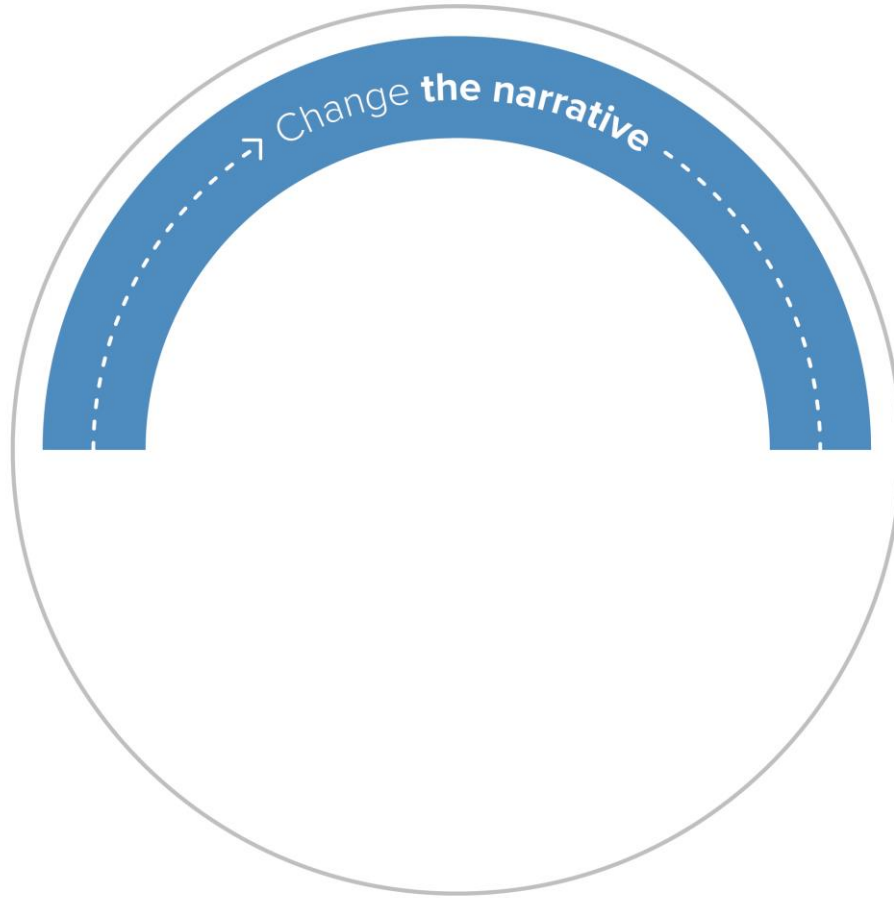


Site Visits: Mayfair, East San Jose

# Mobility Definition



# Strategies

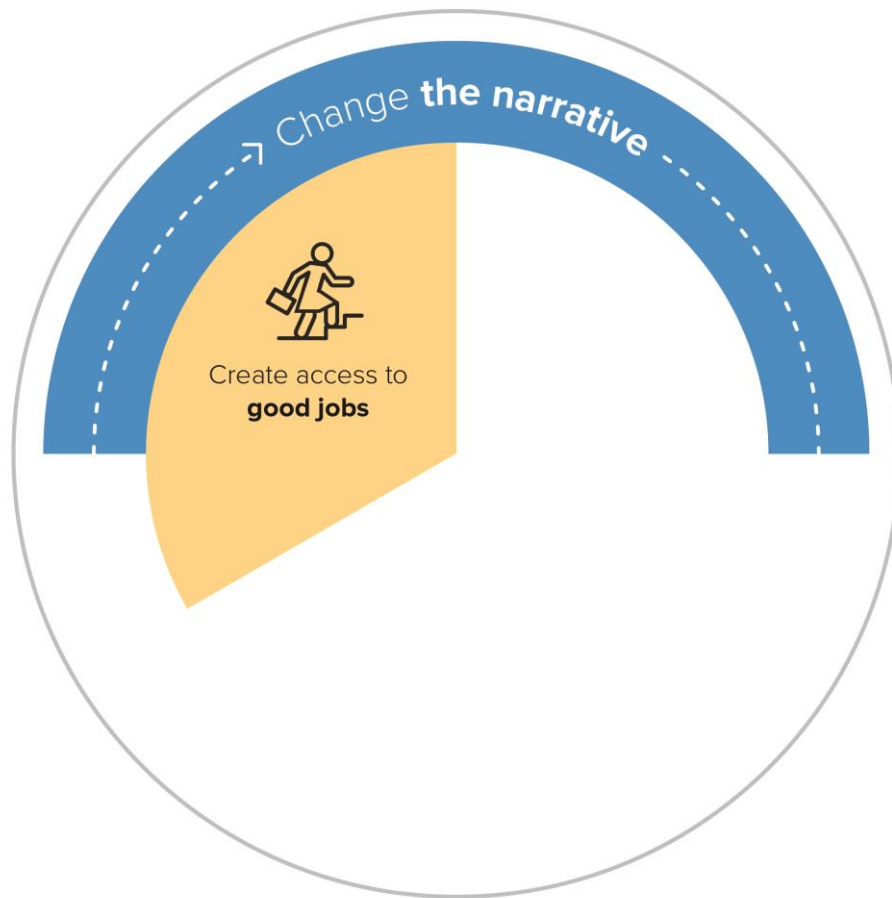




*Narratives are like the air we breathe: It's the context for everything.*

— Ai-jen Poo, Partnership member

# Strategies







Create Access to Good Jobs

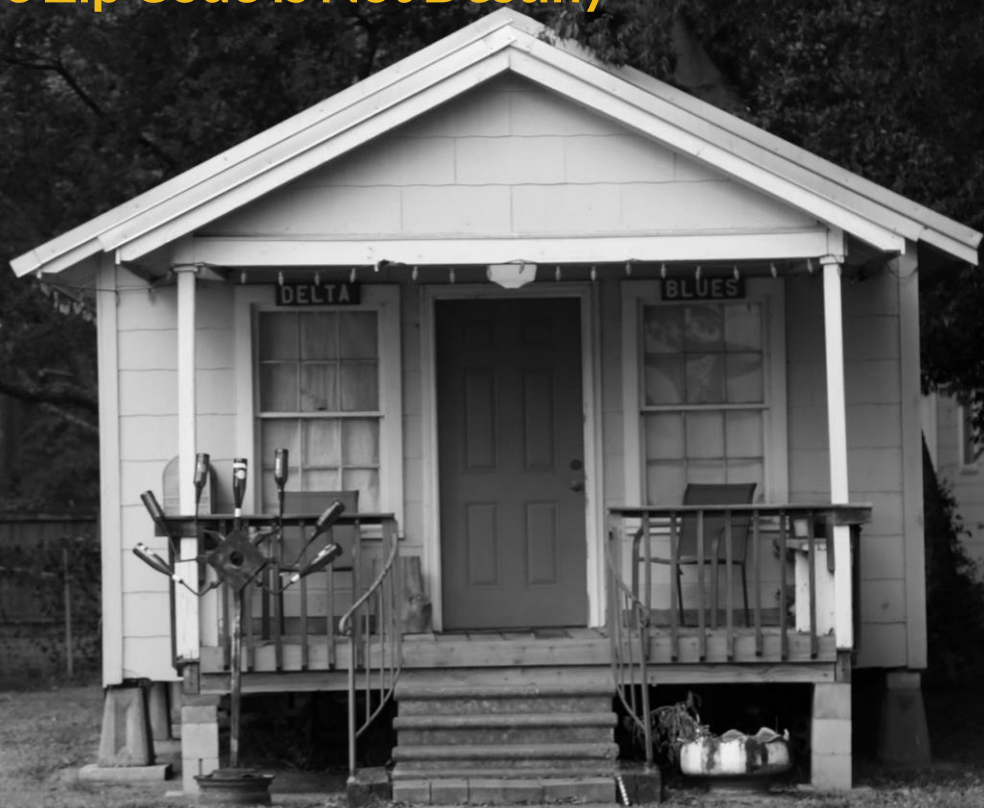
*Robots don't yet do empathy.*  
— Larry Katz, Partnership member



# Strategies



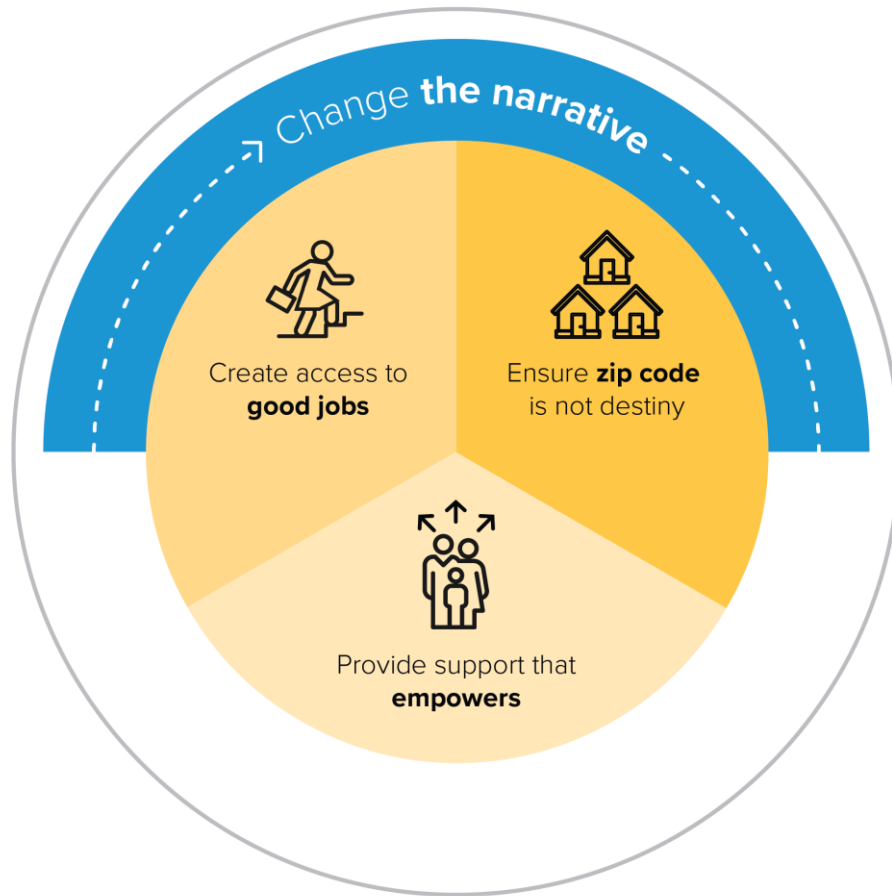
## Ensure Zip Code is Not Destiny



*The community [should] work with people for solutions. It works if you feel like you're both understanding why you're doing it and you have a choice in it. As opposed to something being done to you.*

—African American woman & Detroit resident

# Strategies



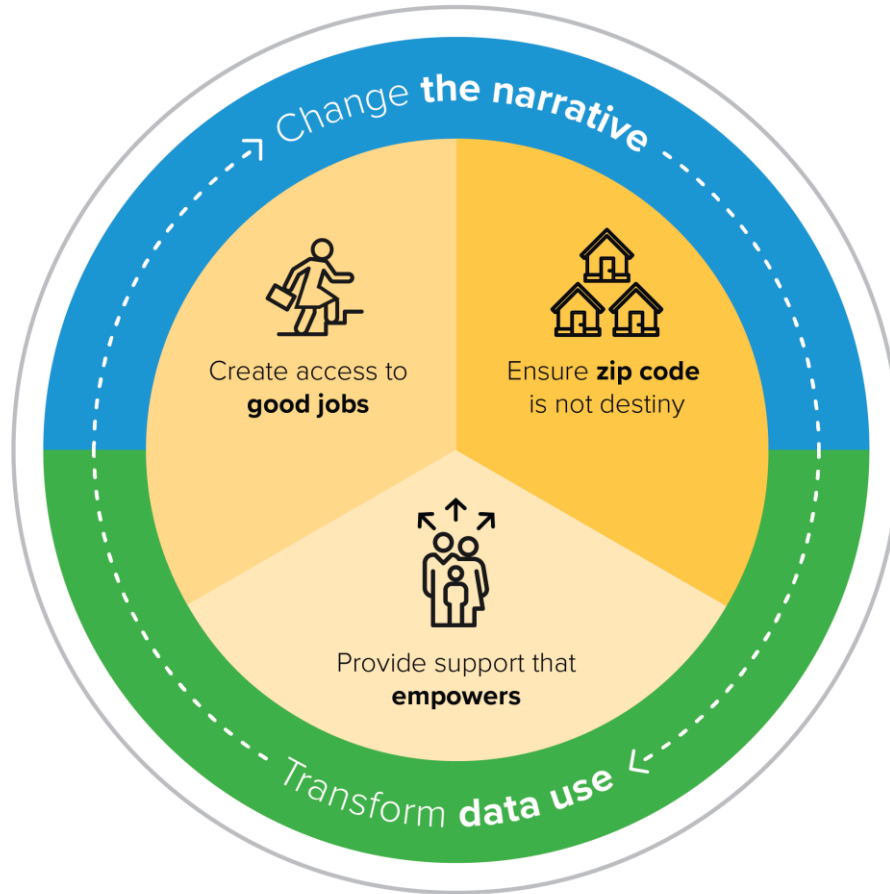
## Provide Support that Empowers



*Lummi people do not consider themselves poor because they are following the values of their elders: family , land & water, balance, love & respect, and voice. There is not word for poverty in their language. It would most closely translate to, “to be without family,” which would never happen.*

—Lummi woman & resident of  
Lummi Nation

# Strategies





## Transform Data Use

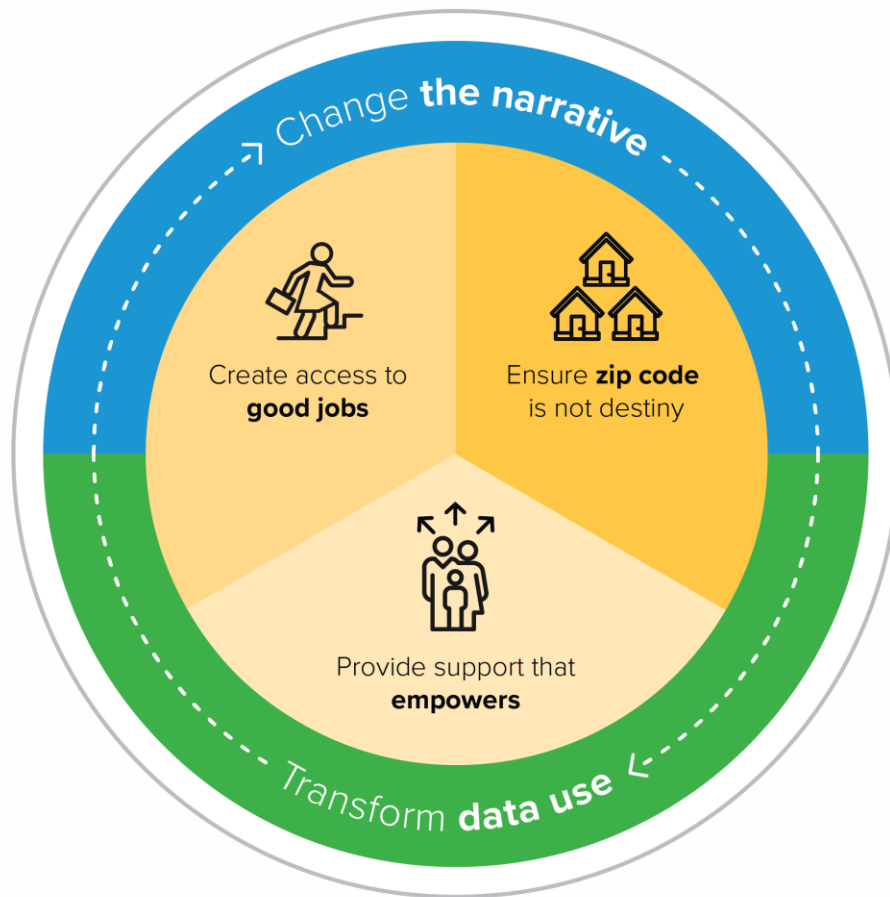
*We review every child death that happened in the city. . . In many cases, each of us has a file on the child or the family at least an inch thick.*

—Dr. Leana Wen, Commissioner of Health, City of Baltimore

Mutually reinforcing  
strategies

+

Cross-sector  
collaboration



**What are your reactions and questions?**

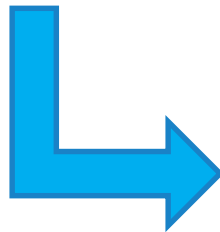




# Webinar Housekeeping



- Webinar is being recorded
- Slides and recording will be sent out after the webcast
- All participants are muted
- Type your **questions** or **comments** into the Questions box on the right. Be sure to include your name and organization.



- Questions later? [Events@urban.org](mailto:Events@urban.org)
- #MobilityFromPoverty

For further information



[www.MobilityPartnership.org](http://www.MobilityPartnership.org)



[nisha@urban.org](mailto:nisha@urban.org)



[@heylopedia](https://twitter.com/heylopedia)